

Document Properties

Grid – Grid line count 500 -> 1m2
Units similar for Model + Layout in mm

Rhino-Options

Appearance - Activate

Viewport tabs at start

General - Activate

«Show surface isocurves»

Keyboard: (For Macs without «Delete» key)

Set «F5» to: !_Delete

Modeling Aids – Nudge – activate

«Arrow keys» - «Nudge steps»:

1 - ctrl10 - shift0.1

Toolbars . «Size and Styles» – «Button

Options»: deactivate

«Cascade as menu»

«Visibility»: activate

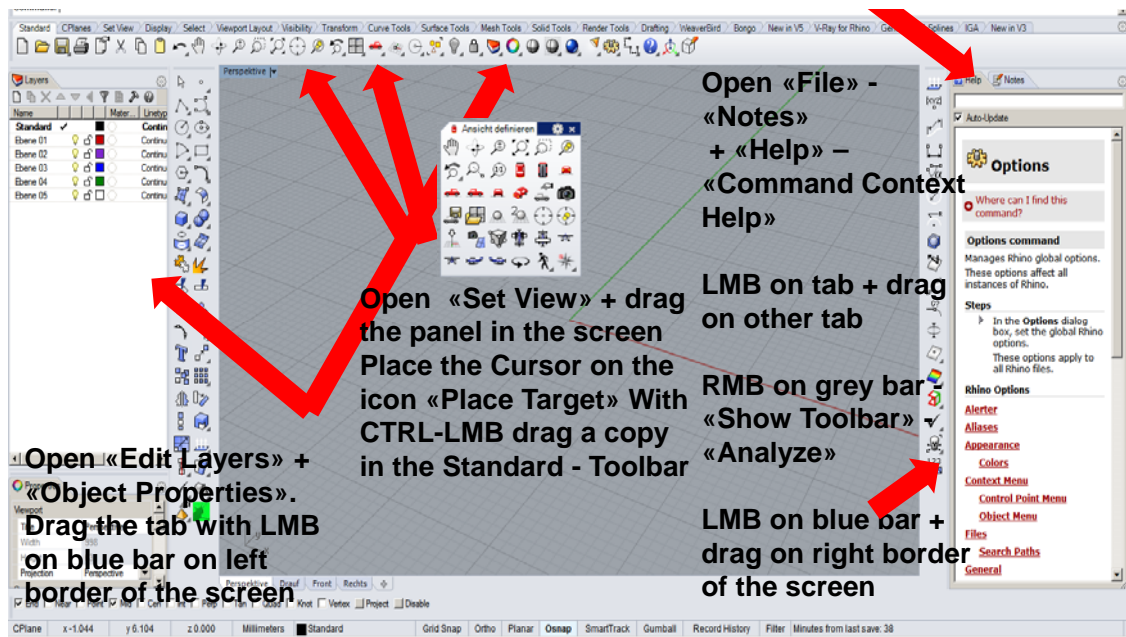
«Sidebar visible»

Updates + Statistics – desable

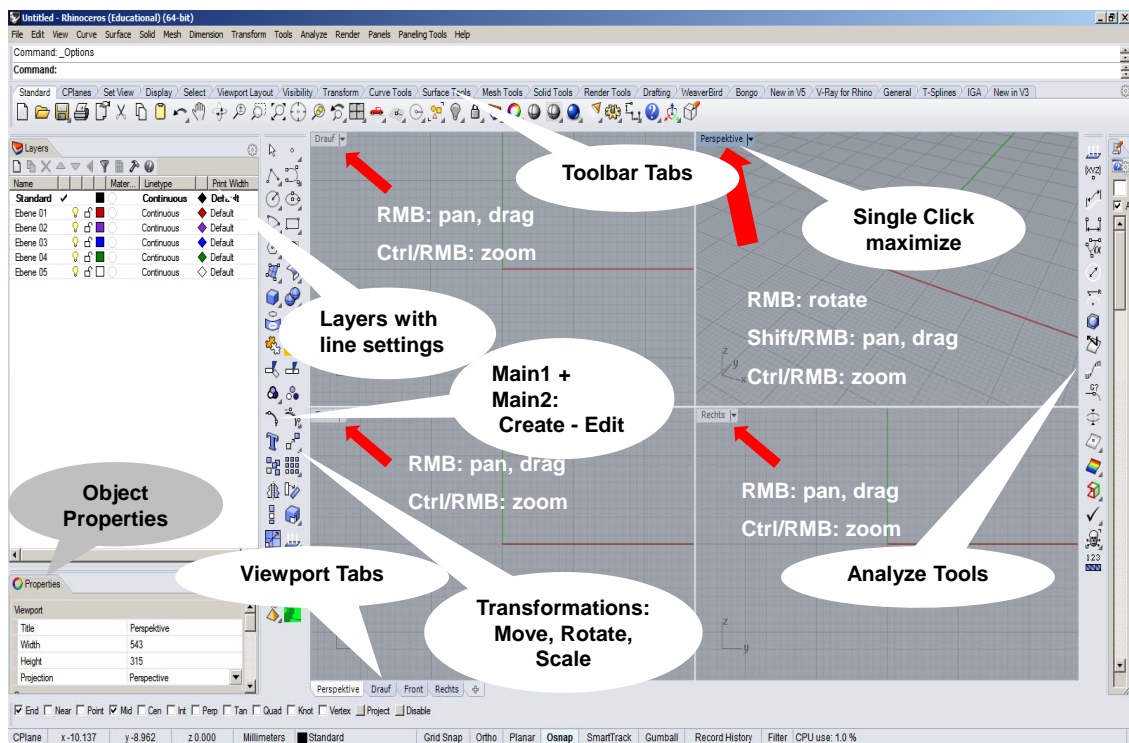
View - «Viewport properties» - Activate

«Single click maximize»

Set Options



Rhino 5 – Screen Settings



Navigation



Learning Rhino

Try out systematically the functions with all options.

Please consider: to repeat = to memorize - Open Rhino 2x/week

Only when you know several commands you can act competently.

You must always have a second way to solve your problem.

As Beginner use the „Command Context Help“ or the „Help“ (F1)

FIRST...

Set the Options

Syntax for exact entry in command prompt:

0,0,0 = x,y,z from absolute 0-Point

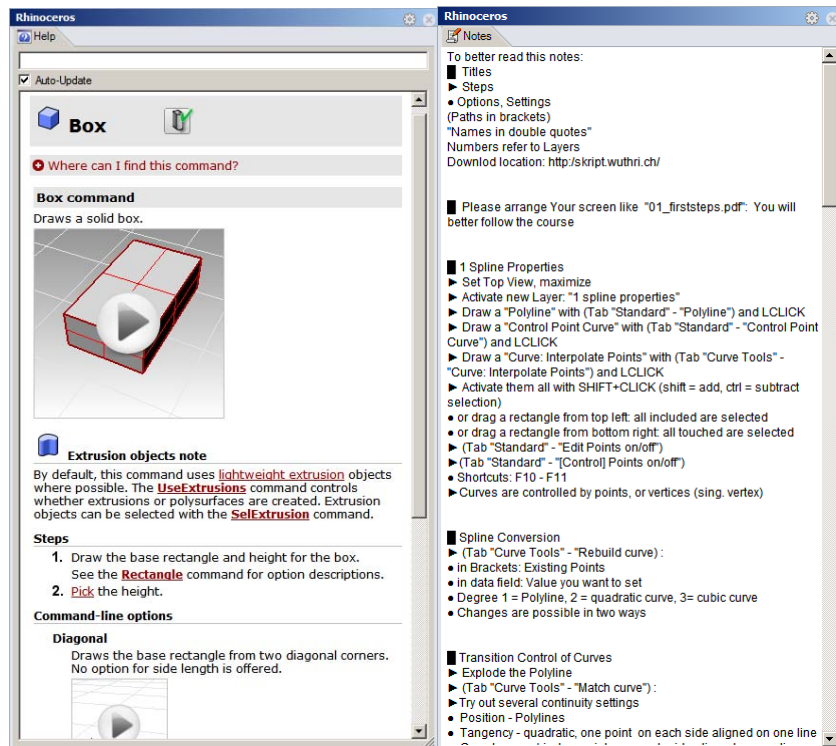
r0,0,0 = x,y,z from last selected Point (r = relative)

0<0 = polar coordinates (Length, Angle) from absolute 0-Point

r0<0 = polar coordinates (Length, Angle) from last selected Point

Helpfull

While drawing, the TAB - key fixes the direction, You can enter the length with command prompt.



Helpfull: Command Context Help + Notes

Epilog Laser Driver: Start the computer, log in as: **localuser – Plot@bfh**

Open Rhino, „File new“ or Ctrl-N, „Laser.3dm“

Activate a new layer: File - Import – „YourFile“

Choose all Layers and set the Print Width: **Hairline**

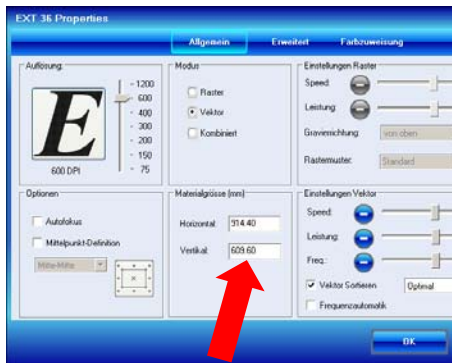
Or choose the Objects and set the Print Width: **Hairline**

File – Print or Ctrl-P

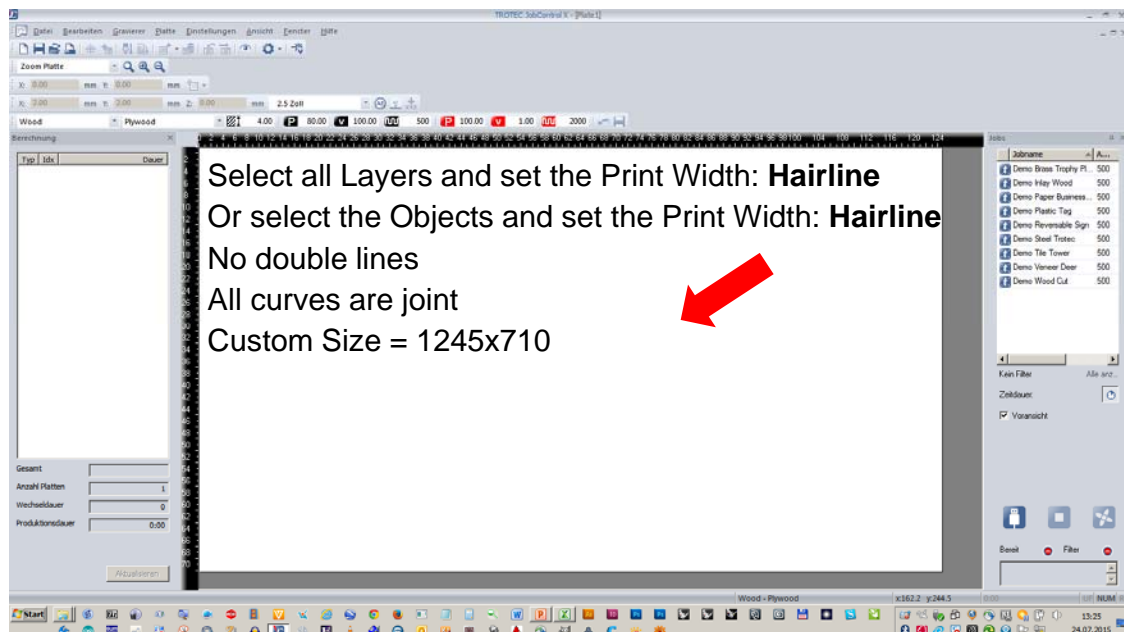
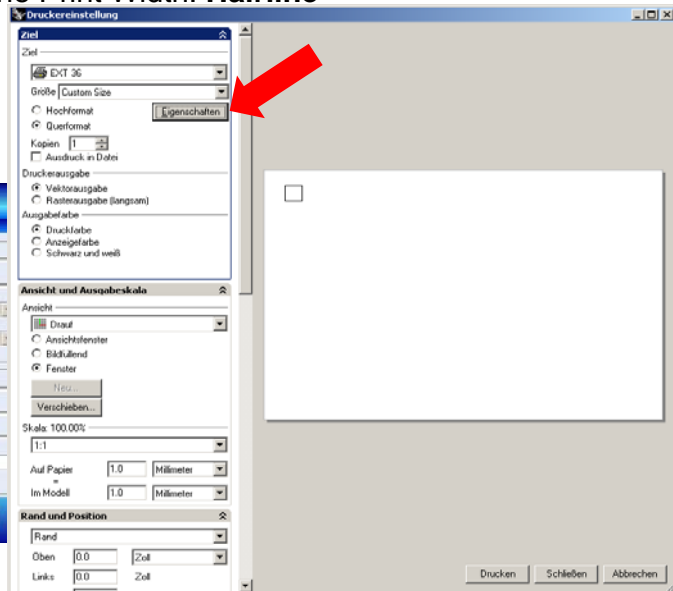
Epilog Driver - Properties

Custom Size = 914x609,

Advanced: Load Settings



Epilog Driver



Trotec Driver: Job Control or Alphacam